

2006 Summer Weather Normal Peak Load and RSP07 Short-run Energy and Peak Forecast

PAC16

February 27, 2007

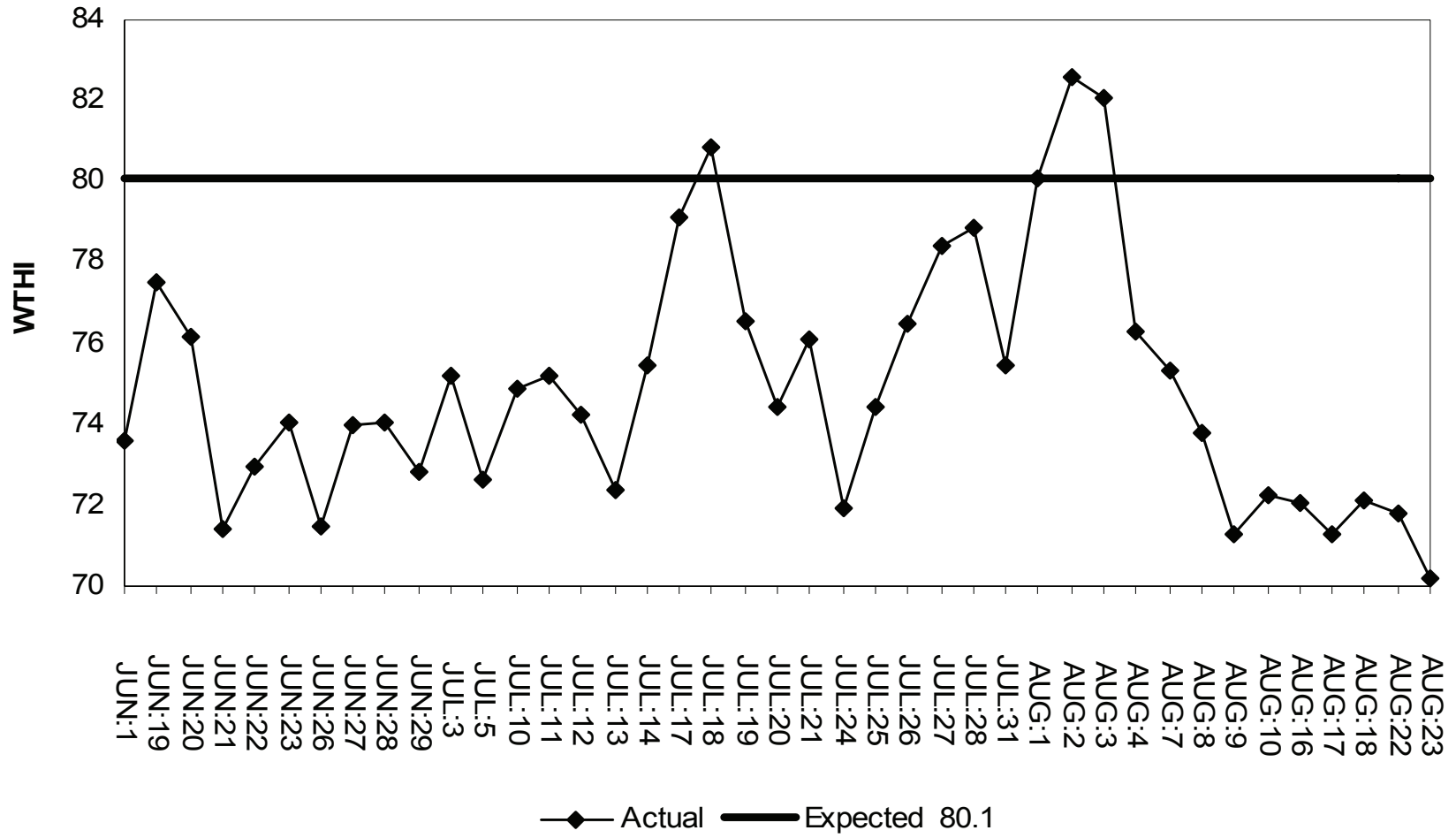
David Ehrlich

Principal Analyst, Load Forecasting, Resource Adequacy

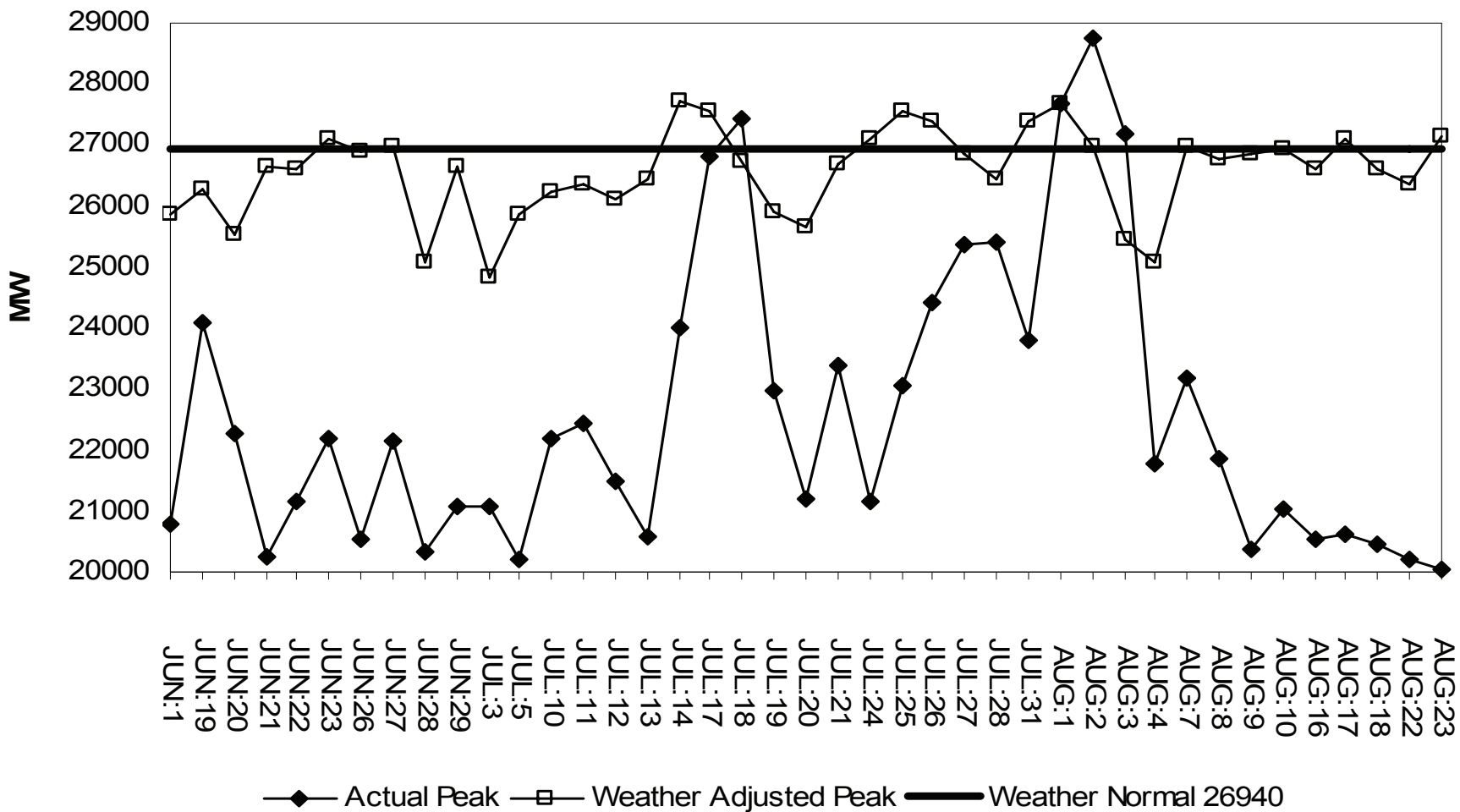
2006 Weather Normal Summer Peak

- Weather normal summer peak for summer of 2006 is 26,940 MW, just 0.3% (85 MW) lower than the April 2006 forecast of 27,025 MW
- Actual summer peak of 28,130 MW on August 2nd does not include over 500 MW of emergency resources called due to the OP4 capacity deficiency

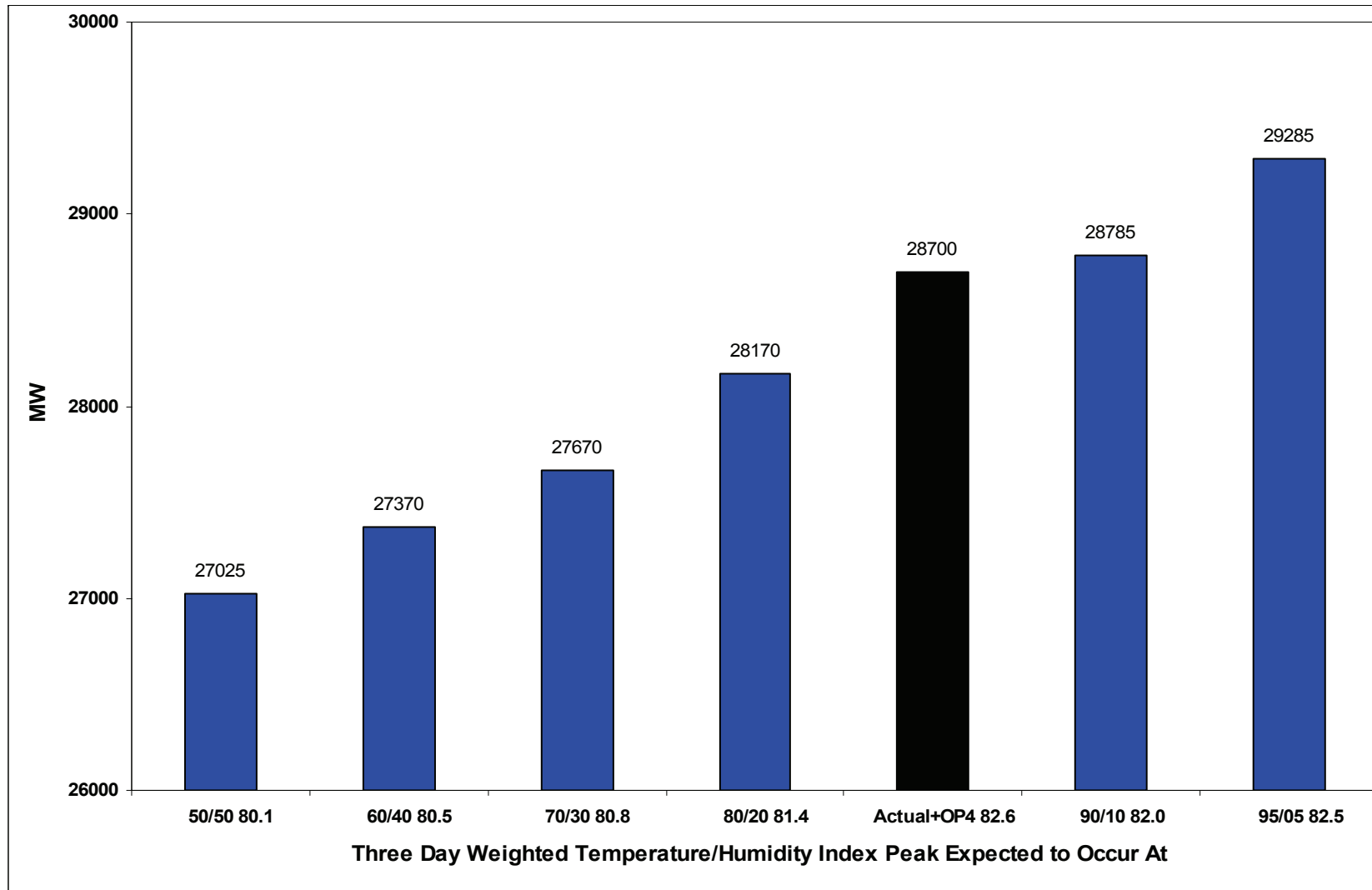
ISO-NE 2006 Summer Peak Load Weather Normalization Temperature/Humidity Index at time of Daily Peak



ISO-NE 2006 Summer Peak Load Weather Normalization Weekday Daily Peaks June - August



ISO-NE 8/2/2006 Peak and RSP06 2006 Summer Peak Forecast Distribution



Summary of Changes for RSP07:

Inputs:

Price of Electricity Increases of 20% in 2006,
11% in 2007 (1.2 Bil \$ Transition), and 6% in 2008 (1.4 Bil \$ Transition)

No Significant Changes in Underlying Economic Growth

Over Forecast 2006 Summer Peak by 85 MW

Energy was expected to grow by 0.6% in 2006 but actually declined by -1.6%

Results:

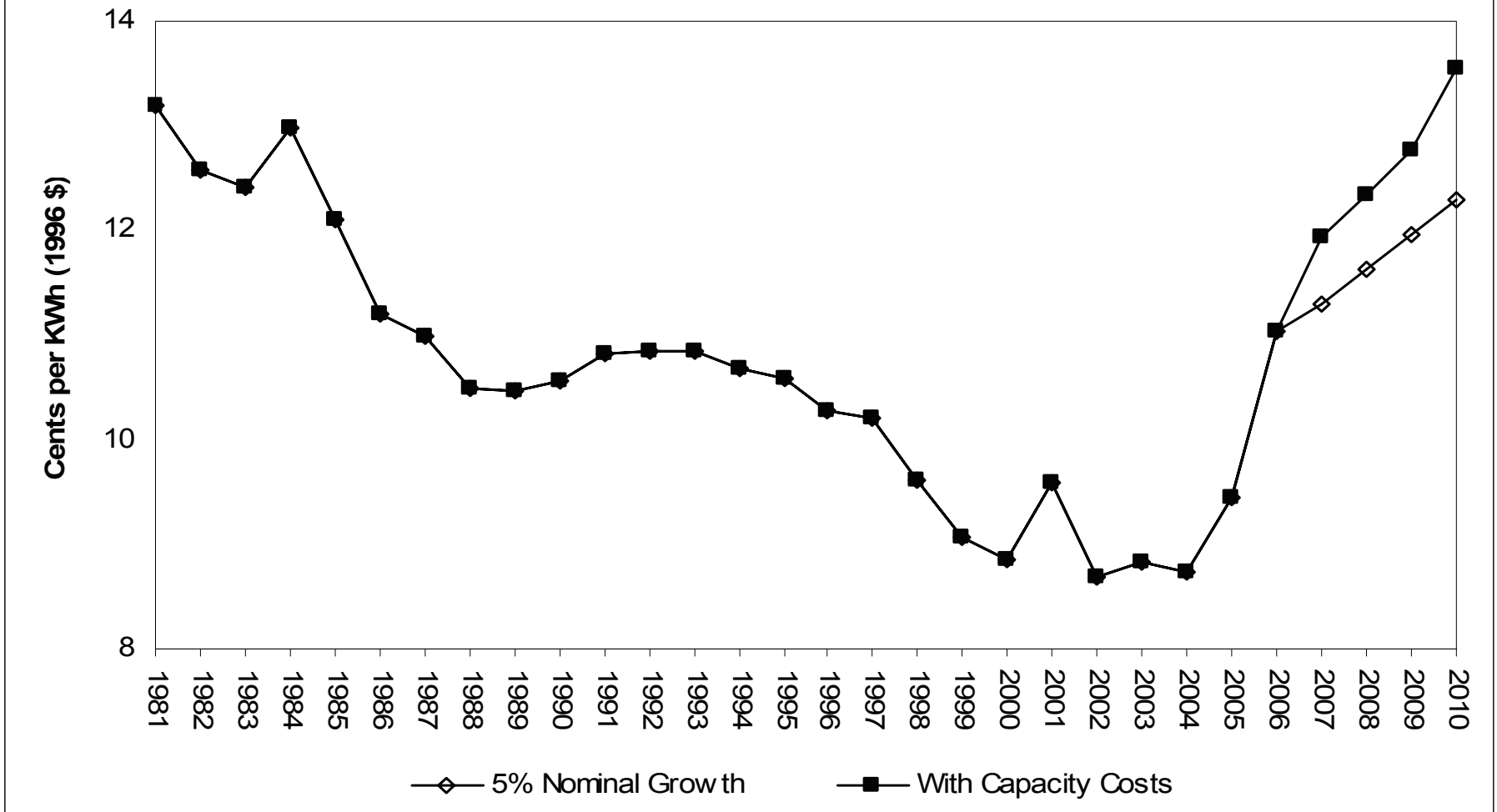
Slower Energy Growth

Small Changes to 2007/2008 Power Year Seasonal Peaks

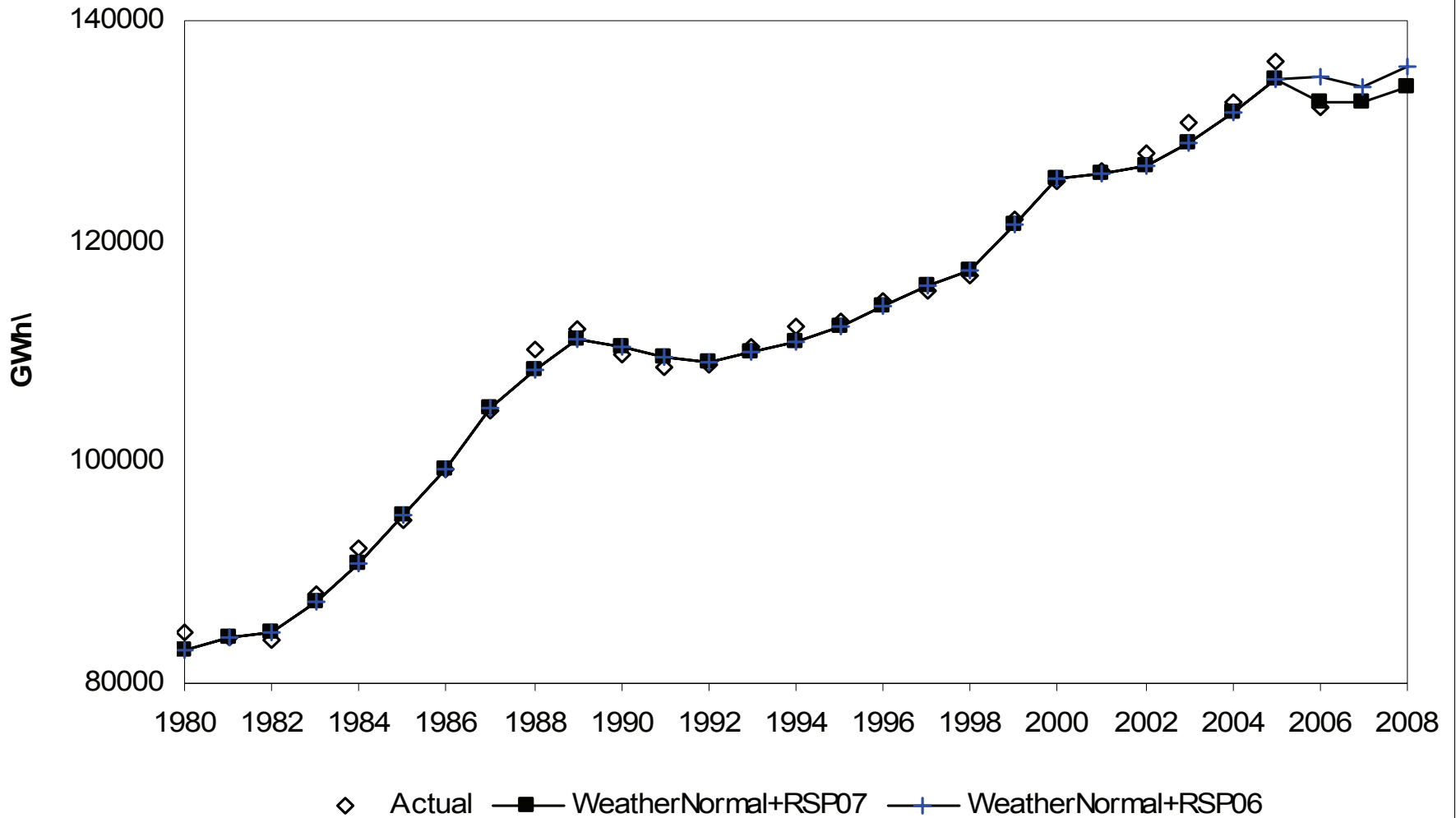
RSP07 ISO-NE Short-run Peak (MW) and Energy (GWh) Forecast

	Weather		Forecast 2008	Percent Change 06 to 07	Percent Change 07 to 08	Difference from RSP06		
	Normal 2006	Forecast 2007				2006	2007	2008
RSP07								
NEL	132435	132615	133980	0.1	1.0	-2565	-1360	-1795
SUMMER 50/50	26940	27360	27885	1.6	1.9	-85	5	-15
90/10		29165	29750					
WINTER 50/50	22755	22845	23070	0.4	1.0	155	295	260
90/10		23800	24040					
RSP06								
NEL	135000	133975	135775	-0.8	1.3			
SUMMER 50/50	27025	27355	27900	1.2	2.1			
90/10		29180	29775					
WINTER 50/50	22600	22550	22810	-0.2	1.2			
90/10		23475	23745					

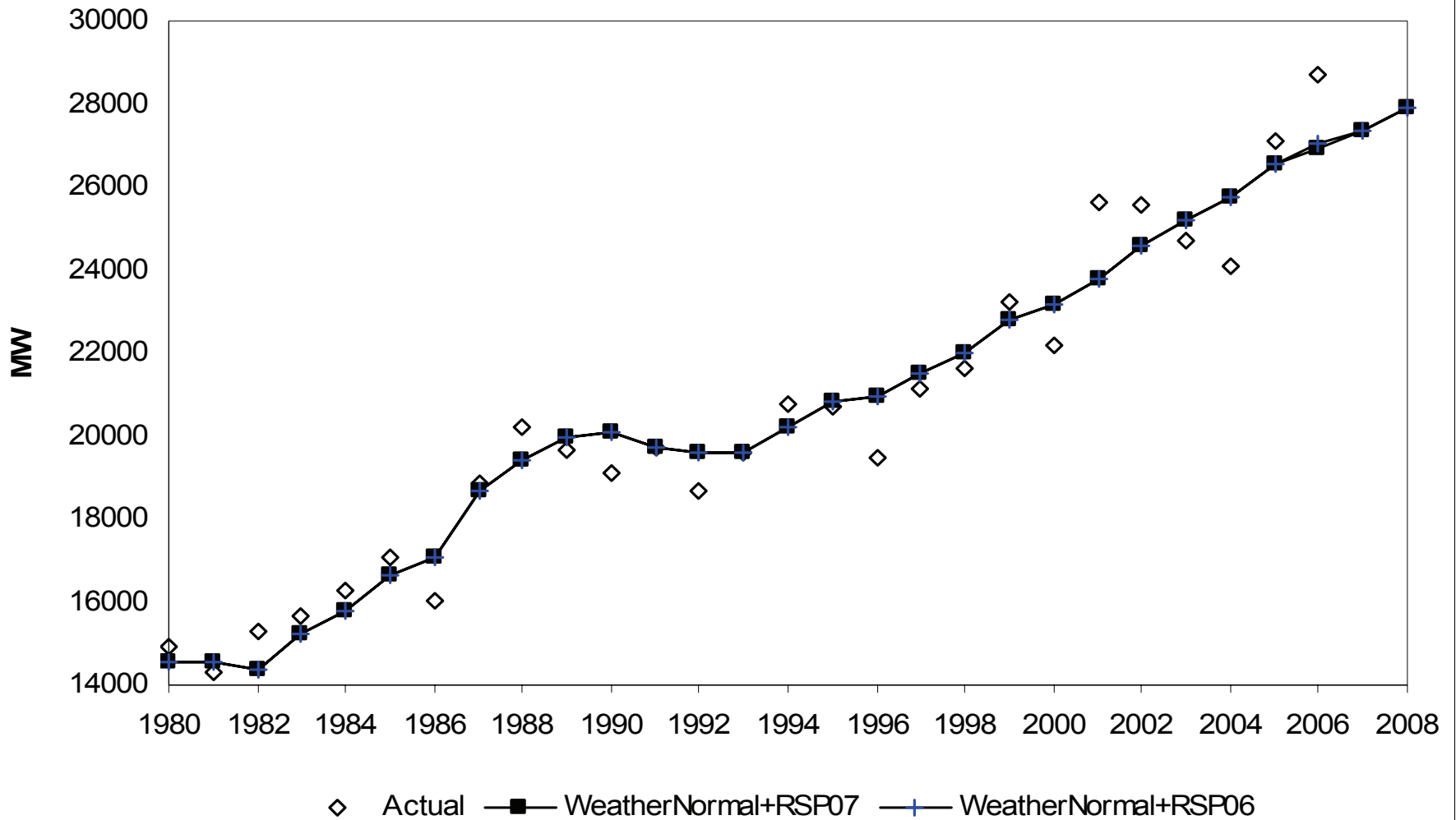
RSP07 New England Annual Retail Real Electric Prices With and Without Estimated Capacity Costs



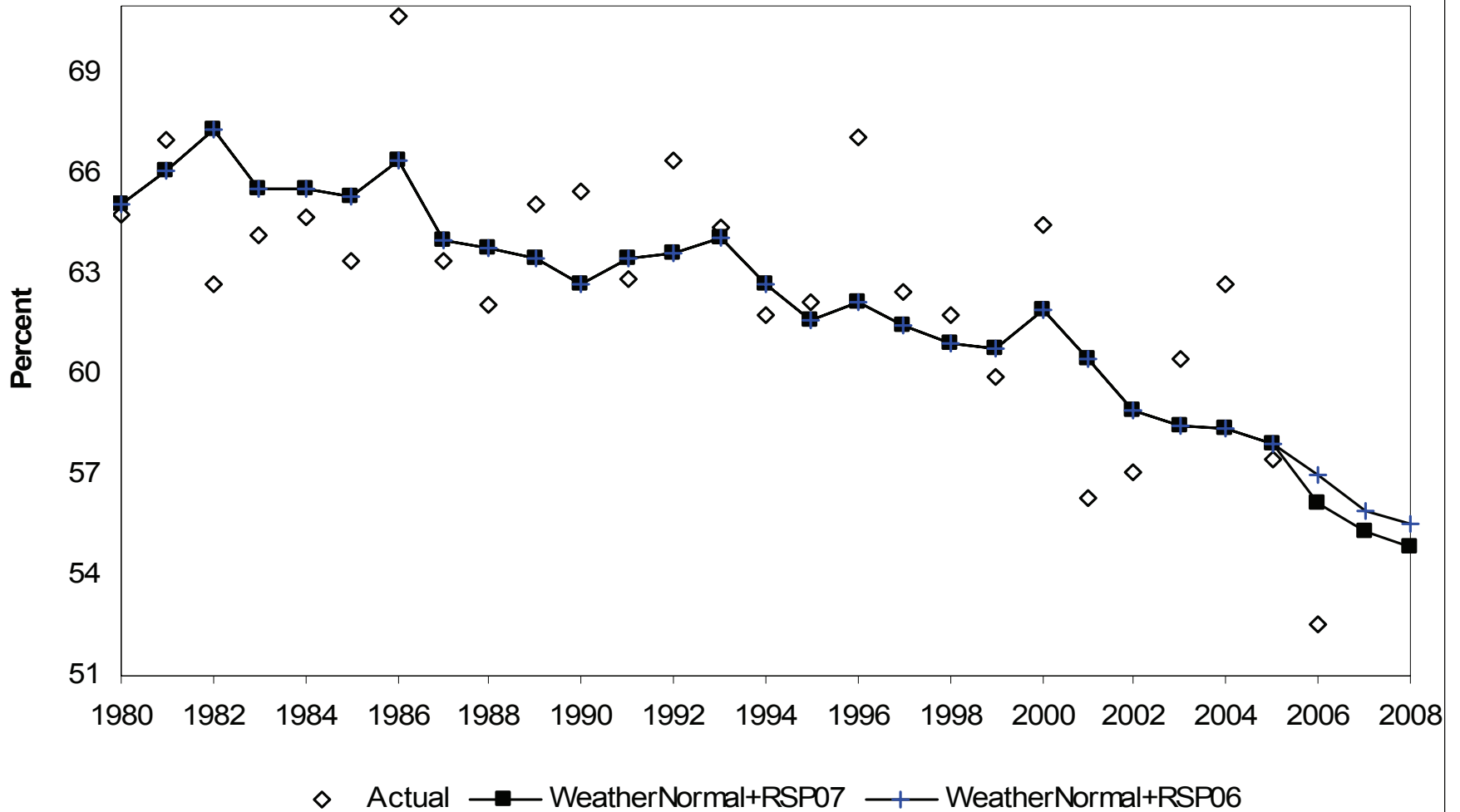
ISO-NE Net Energy for Load (GWh) Actual 1980-2006 / Weather Normal & Forecast 2006-2008



ISO-NE Summer Peak Load (MW) Actual 1980-2006 / Weather Normal & Forecast 2006-2008



ISO-NE Summer Peak Annual Load Factor (%) Actual 1980-2006 / Weather Normal & Forecast 2006-2008



ISO-NE 1991 to 2006 CELT Reports: Weather Normal Summer Peak Forecast Error
Average Error (Abs Val): First Year 0.8%, Third Year 2.2%, Fifth Year 4.2%

